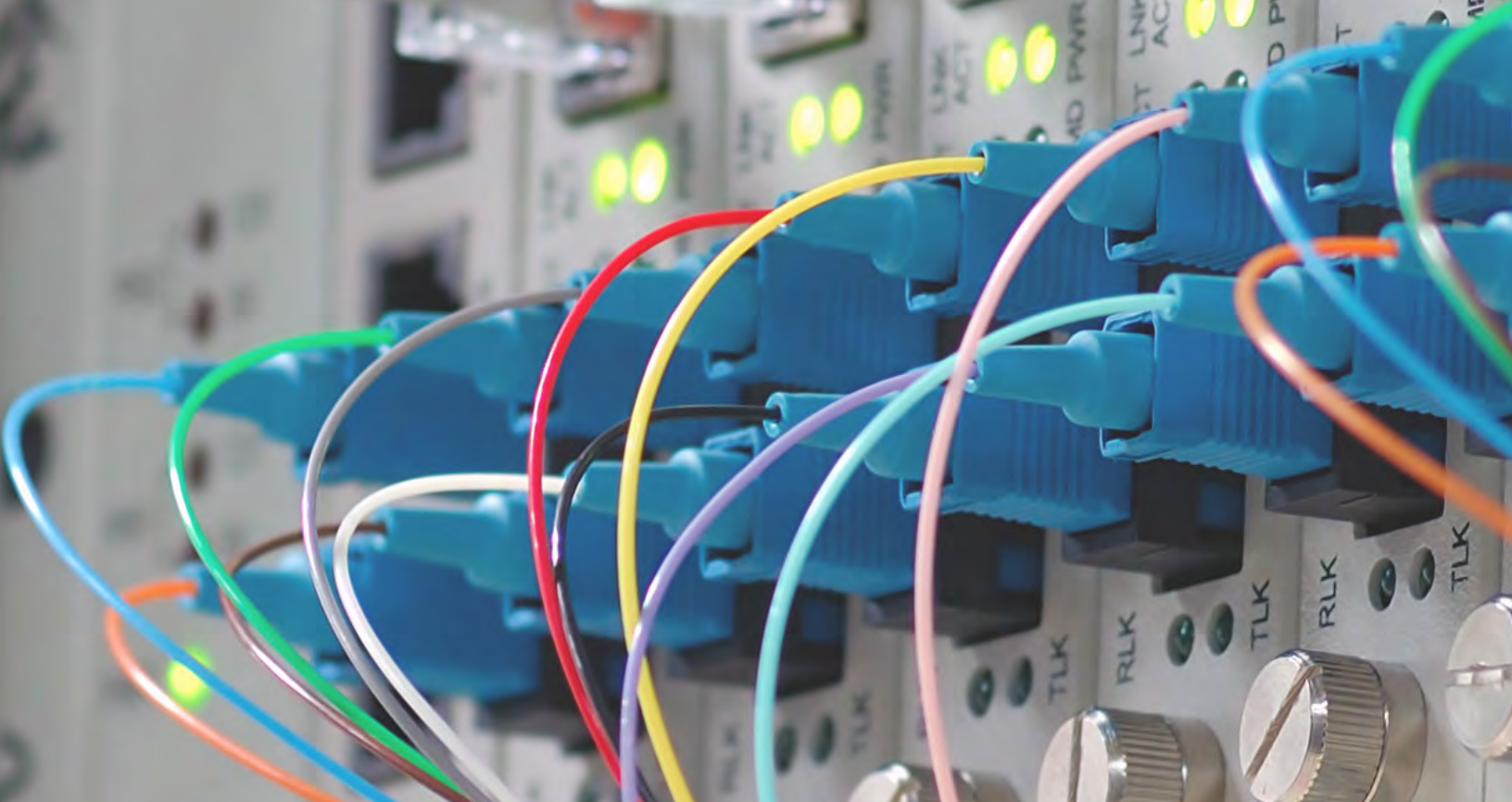


A close-up, artistic photograph of several fiber optic cables. The cables are in various colors (blue, orange, green, white) and are bundled together, with some showing individual strands. They are set against a dark background, and the lighting creates a sense of depth and texture.

NO MORE LOOSE ENDS

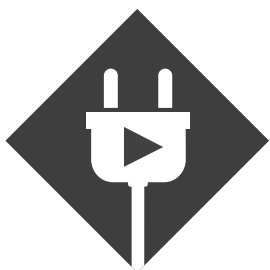
PRE-TERMINATED FIBER CABLE
FAST. TESTED. READY TO GO.



PRE-TERMINATED FIBER CABLE

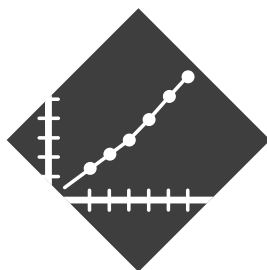
ANY STRAND. ANY CONNECTOR. ANY LENGTH. ANY TIME.

Who has the time or money to terminate cables in the field? You've got more important things to do. Save yourself a lot of trouble and eliminate all performance worries with custom pre-terminated cables from Black Box. You'll get top-quality fiber cable that's built to your exact specs, fully tested, and shipped ready for installation. Plug-and-play fiber—your way—has never been easier. You take care of business. We'll take care of the loose ends



FASTER DEPLOYMENTS

Cut installation time and labor costs by 70% to 80% with pre-terminated fiber cable. Because it arrives ready for work, deployments are as easy as plug-and-play.



PROVEN PERFORMANCE

Get top performance with no field termination errors. All Black Box cables undergo extensive inspection and testing, and come with a lifetime guarantee.



QUICK TURNAROUND

Who has time to wait? Get what you Need—when you need it. Most Black Box fiber cables are turned around in less than a week—sometimes, even in a day.





WHY BLACK BOX

IN STOCK

Why wait? Black Box stocks an extensive selection of fiber cable so we can build the exact cable you need without delays.

COMPLETE YOUR FIBER CHANNEL

Complete your fiber infrastructure with patch cables, connectors, adapters, panels, and enclosures from Black Box.

LIFETIME GUARANTEE

No questions asked. Black Box fiber cable is guaranteed for life.

FREE 24/7 SUPPORT

At Black Box we are committed to your complete satisfaction. Our dedicated team of highly-trained support technicians is available 24/7 at blackbox.com.

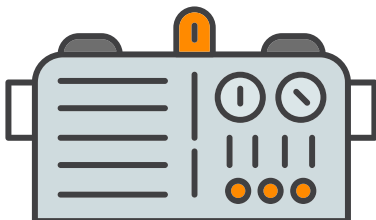
FREE APP. ENGINEERING

Need help configuring a cable for your specific application? Our engineers can help at blackbox.com.

TRUSTED SINCE 1976

As a leading technology solutions provider, Black Box is dedicated to helping customers build, manage, optimize, and secure IT infrastructures.

VISIT OUR ONLINE CONFIGURATOR



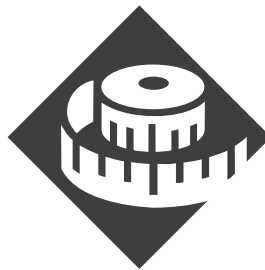
With our new tool, you can build and order your cable online in seconds. With just a few clicks, you'll get a custom part number and a price for fast ordering.

BLACKBOX.COM



LOWER TOTAL COST

Forget about expensive connectors, consumables, and equipment, plus the labor, time, and testing required for field terminations.



YOUR WAY

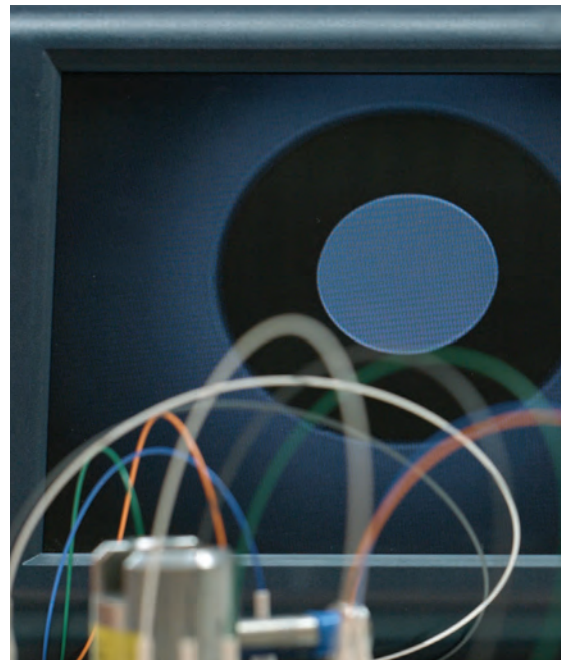
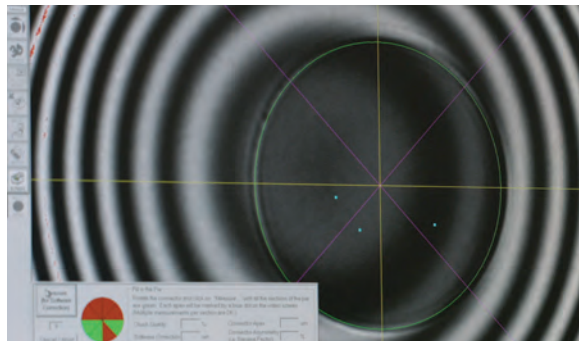
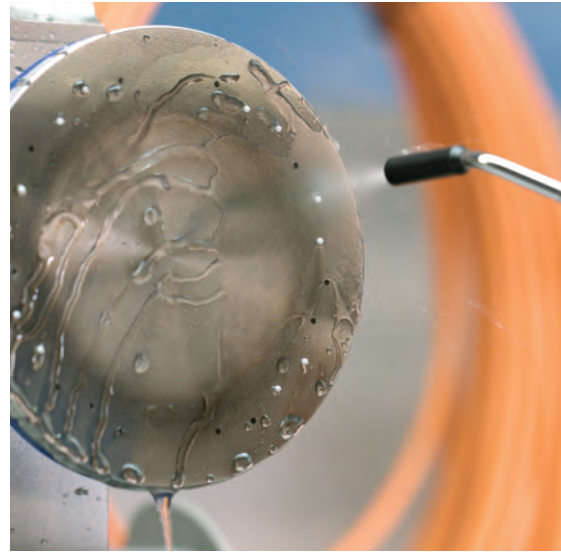
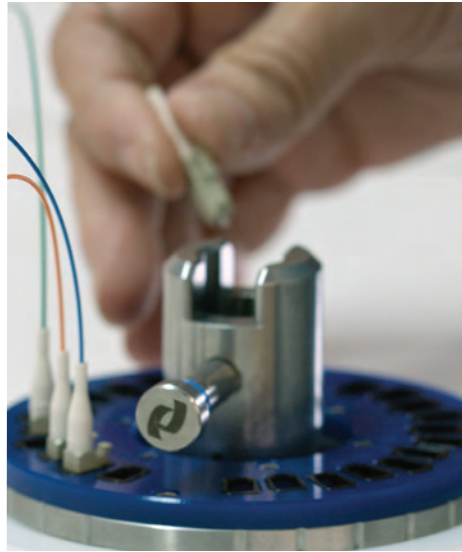
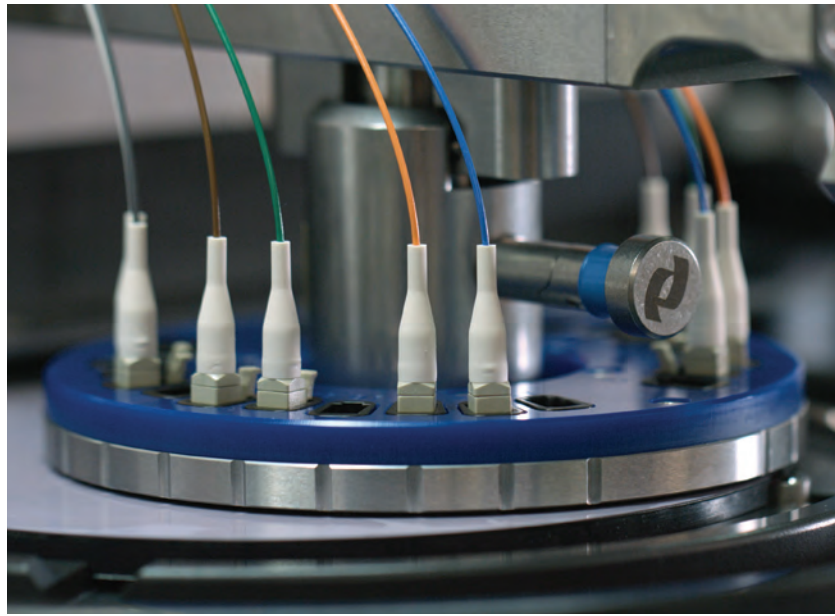
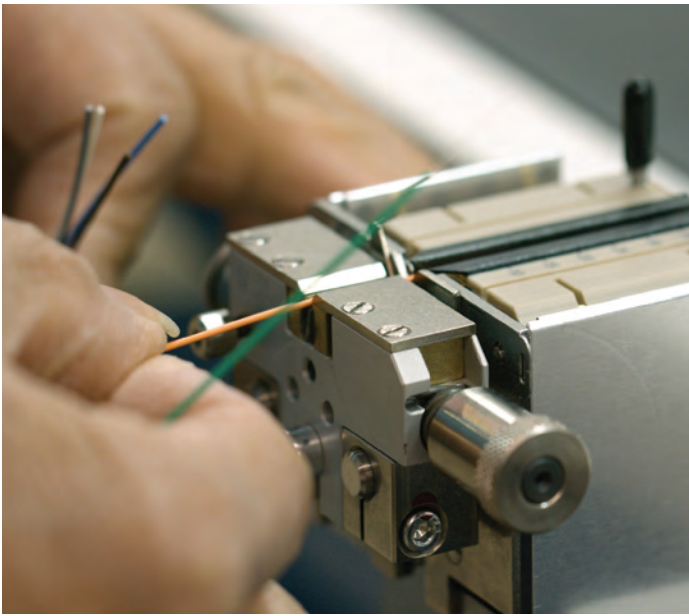
Get exactly what you want. Just specify the core, cable type, jacket, connector, strand count, breakouts, labeling, and if you want, a pulling eye.



LIMITLESS OPTIONS

Cable: Indoor, Indoor/Outdoor, Outdoor
Glass: OM1-OM4, OS2
Jackets: OFNR, OFNP, PE
Strand Counts: 2-24
Connectors: LC, SC, ST





BUILT-IN PERFORMANCE

CLEAN IS CRITICAL

In the world of fiber, clean means everything. Black Box pays meticulous detail to cleanliness and to producing contamination-free fiber terminations. The result is top-performing cable that's guaranteed for life.

IT'S ALL IN THE DETAILS

Producing high-quality fiber is a precise business. While every cable is unique, fiber termination demands strict adherence to controlled and documented procedures-every time. Black Box is ISO registered so you can be assured of receiving top-quality, error-free cables that are manufactured within stringent parameters—from stripping the cable and curing the epoxy to fitting and polishing the ferrules.

GEOMETRY TESTS

Interferometry (or geometry) is an important testing technique for fiber optic cable. Black Box performs three tests on each connector after polishing to ensure it falls within control parameters. Consistent, high quality polishing improves long-term cable performance.

APEX OFFSET

This test measures the distance from the peak of the radius, or the apex, to the center of the fiber. It measures the degree to which the end face "dome" is centered. This ensures physical contact on mating.

RADIUS OF CURVATURE

This is the radius of the spherical end face formed during polishing. This ensures that both fibers make contact. The radius of curvature needs to be within certain parameters to ensure proper apex offset and fiber height.

FIBER HEIGHT

This measures the height that the fiber core protrudes or the depth that it is recessed into the ferrule surface. The fiber must fall within certain test parameters to ensure proper physical contact.

END-FACE INSPECTIONS

Black Box performs end-face inspections throughout the manufacturing process to check for cleanliness, fractures, and scratches. These can affect performance, and can be a source of contamination.

LINK LOSS

Factory termination ensures a better ferrule-to-fiber fit to minimize back reflection and improve link loss. All Black Box cables are tested for insertion loss and return loss.

LOWER COST OF OWNERSHIP

ARRIVES READY FOR WORK

Cut installation time and labor costs by 70 to 80%. Schedule faster deployments by eliminating time-consuming, labor-intensive field terminations, performance testing, and field do-overs. Every Black Box pre-terminated fiber cable is fully tested before it leaves the building. When it gets to you, it's ready to use—right out of the box.

FORGET PRICEY EQUIPMENT

Why spend a lot of money buying or renting expensive polishing, splicing, and fiber termination and test equipment? With pre-terminated fiber, you'll eliminate the need for all that equipment saving a lot of money, time, and aggravation.

MINIMIZE DOWNTIME

With pre-terminated fiber, you can deploy new installations quickly and make changes on the fly. You'll be able to minimize downtime, especially in disaster recovery situations when you need to establish temporary network communications.

MAXIMIZE PERFORMANCE

Because factory-terminated fiber cable is manufactured in a clean environment, unlike field conditions, you'll get clean, uncontaminated fiber. It will perform better, enable lower loss budgets, and provide better transmission. Plus, we'll guarantee the cable for life.

NO LEFTOVERS

With pre-terminated fiber, you don't have to worry about the cost and time involved in buying bulk cable, connectors, and consumables. Better yet, you won't be stuck with leftover scrap materials, waste and expensive consumables.

QUICK TURNAROUNDS

Build your cable and get a quote in seconds with our online configurator. With lead times of only a week, compared to two or three weeks, you'll get your cable quickly. Need it right away? Just ask. We may be able to turn your cable around in 24 hours.



HOW TO ORDER PRE-TERMINATED FIBER

Go to BLACKBOX.COM to configure your cable online, and get an instant price quote.

BUILD YOUR PRODUCT SKU

STEP 1: Cable Type	STEP 2: Jacket	STEP 3: Fiber Strands	STEP 4: Fiber Type	STEP 5: Connector (A)	STEP 6: Breakout (A)	STEP 7: Connector (B)	STEP 8: Breakout (B)	STEP 9: Pulling Eye	STEP 10: Length (ft.)
X X	- X	- X X	- X X	- X X	- X X	- X X	- X X	- X	- X X X

STEP 1

SELECT CABLE TYPE

- ID: Indoor Tight Buffered
- IO: Indoor/Outdoor Tight Buffered
- IA: Indoor Interlocking Armored Tight Buffered
- HA: Indoor/Outdoor Interlocking Armored Tight Buffered
- OD: Outdoor Loose Tube Dry/Dry
- ZP: Zipcord (Duplex)

STEP 2

SELECT CABLE FLAME RATING

- P: Plenum (OFNP)
- R: Riser (OFNR)
- E: PE (Outdoor)

STEP 3

SELECT NUMBER OF FIBER STRANDS

- | | |
|-------------|--------------|
| 02: 2-Fiber | 08: 8-Fiber |
| 04: 4-Fiber | 12: 12-Fiber |
| 06: 6-Fiber | 24: 24-Fiber |

STEP 5

SELECT CONNECTOR TYPE FOR SIDE A (OUTSIDE/PULLING END)

- LC: LC UPC
- SC: SC UPC
- ST: ST UPC
- AL: LC UPC
- AC: SC UPC
- NC: No connector on side A

STEP 6

SELECT BREAKOUT LENGTH FOR SIDE A IN INCHES (OUTSIDE END)

** Enter two digit break-out length

STEP 7

SELECT CONNECTOR TYPE FOR SIDE B (INSIDE END)

- LC: LC UPC
- SC: SC UPC
- ST: ST UPC
- AL: LC UPC
- AC: SC UPC
- NC: No connector on side B

STEP 8

SELECT BREAKOUT LENGTH FOR SIDE B IN INCHES (INSIDE END)

** Enter two digit break-out length

STEP 9

SELECT PULLING EYE OPTION

- N: No pulling eye
- A: Pulling eye side A (Outside end)
- B: Pulling eye side B (Inside end)
- C: Pulling eye both sides

STEP 10

SELECT LENGTH OF CABLE IN FEET



UPC vs. APC CONNECTORS

UPC stands for Ultra Physical Contact. APC stands for Angled Physical Contact. These describe the polish style of the connector endface. UPC connector bodies are blue, while APC connector bodies are green.



UPC POLISH
Curved, 0°, Typical Return Loss: -55 dB



APC POLISH
8° Angle, Typical Return Loss: -65 dB



COMPLETE YOUR FIBER CHANNEL

The right equipment to connect fiber cable inside your building.

Our most popular loaded and unloaded enclosures and shelves.

RACKMOUNT FIBER ENCLOSURES, PANELS, SHELVES

3U Cabinet, 12 Adapter Panels/Cassettes	JPM406A-R6
1U Shelf, 3-Adapter Panel	JPM407A-R5
1U Shelf with Pull-Out Tray	JPM427A-R2
1U Panel, (24) SM/MM LC Connectors	JPM380A
1U Panel Kit, (16) Duplex LC Pairs	JPM390A
Mini Enclosure, 1 Adapter Panel	JPM399A-R2



JPM406A-R6

Protect and terminate fiber cable in damp environments.

FIBER NEMA-4 RATED WALLMOUNT ENCLOSURES

2 Panels	JPM4001A-R2
4 Panels	JPM4000A-R2
Splice Tray Enclosure	JPM4002A-R2



JPM4002A-R2

Panels fit all standard enclosures and shelves.

FIBER ADAPTER PANELS

Standard		
(3) ST Duplex	Beige	JPM450B
	Blue	JPM450C
(3) SC Duplex	Beige	JPM451B
	Blue	JPM451C
(3) LC Duplex	Beige	JPM455B-R2
	Blue	JPM455C-R2
	Aqua	JPM456C
High-Density		
(6) ST Duplex	Beige	JPM460B
	Blue	JPM460C
(6) SC Duplex	Blue	JPM461C
	Gray	JPM462B
	Beige	JPM463B
	Yellow	JPM413A
	Orange	JPM414A
(6) ST-SC Duplex	Beige	JPM466B
(12) LC Duplex	Beige	JPM467B
	Blue	JPM467C-R2
(12) LC Duplex	Aqua	JPM468C
(6) MTP® Connectors	Black	JPM470
Blank Panel	Black	JPM480A



ST, JPM450B



ST, JPM450C



SC, JPM451B



SC, JPM451C



LC, JPM455C-R2



LC, JPM456C



ST, JPM460B



ST, JPM460C



MTP,
JPM470



Blank,
JPM480A



© COPYRIGHT 2021 BLACK BOX CORPORATION. ALL RIGHTS RESERVED. EN_Brochure_Pre-Terminated Fiber_2107